

St Bernadette's Catholic Primary School



Learn, Live, Believe

Safeguarding and Child Protection Policy

*This policy should be read in conjunction with the following documents:
St Bernadette's Health and safety Policy, St Bernadette's Security Policy
And St Bernadette's Health and Hygiene Policy*



Reviewed:
Next Review date:
Ratified by GB:

Sept 2023
Sept 2024
21.9.23 – Reviewed by FGB annually



**St Bernadette's Catholic Primary School
Mission Statement:**

We are a Christ centred community, reaching out to others.

We learn, grow and celebrate together.

We bring our faith to life.



KEY CONTACTS WITHIN THE SCHOOL

DESIGNATED SENIOR PERSON FOR CHILD PROTECTION (DSP)

NAME: Suzanne Williams

CONTACT NUMBER: 029 20733443 stbernadettescardiff@gmail.com

DEPUTY SENIOR PERSON FOR CHILD PROTECTION

NAME: Clare Heathfield

CONTACT NUMBER: 029 20733443

NOMINATED GOVERNOR FOR CHILD PROTECTION

NAME: Sarah Jenkins - 029 20733443

CHAIR OF GOVERNORS

NAME: Paul Newbury: newburyp7@hwbcymru.net

KEY CONTACTS WITHIN THE LOCAL AUTHORITY

REFERRAL TO CHILDREN'S SERVICES AT CARDIFF MULTI AGENCY SAFEGUARDING HUB (MASH)

Where schools have **URGENT** and **IMMEDIATE** concerns for the safety and welfare of a child or young person during office hours telephone: **029 2053 6490 (option 3)**

For cases that are open to Children Services and have an allocated social worker telephone **029 20 536400**

Education Reps at MASH (professionals only) **029 20338438**

To make **URGENT** referrals **OUT OF OFFICE HOURS** telephone **029 20788 570**

REFERRALS: Referrals to be emailed to: CSMASH@cardiff.gov.uk

If you think someone is in immediate risk contact the police on 999.

Police: 101 in cases of enquiries and not emergencies

The **EDUCATION SAFEGUARDING TEAM** is able to provide advice and support.

CONTACT EMAIL: educationsafeguarding@cardiff.gov.uk

Lynda Gallagher, Designated Officer for Safeguarding (DOS)

CONTACT NUMBER: 07778574107

Samantha Dickens – Principal Social Worker for Professional Concerns Team

Samantha.dickens2@cardiff.gov.uk

Enquiries/referrals in relation to Safeguarding concerns about practitioners or persons in position of trust should be sent to professionalstrategy.meetings@cardiff.gov.uk meeting – central mail box

Cardiff Council PREVENT Contacts

Stephanie Kendrick-Doyle - Prevent Co-ordinator

[Stephanie.Kendrick-Doyle@cardiff.gov.uk/](mailto:Stephanie.Kendrick-Doyle@cardiff.gov.uk) 07779961266

Tom Noaks - Prevent Education Officer

Thomas.noaks3@cardiff.gov.uk 07843 381892

Nicola Winstanley - Prevent Project Manager

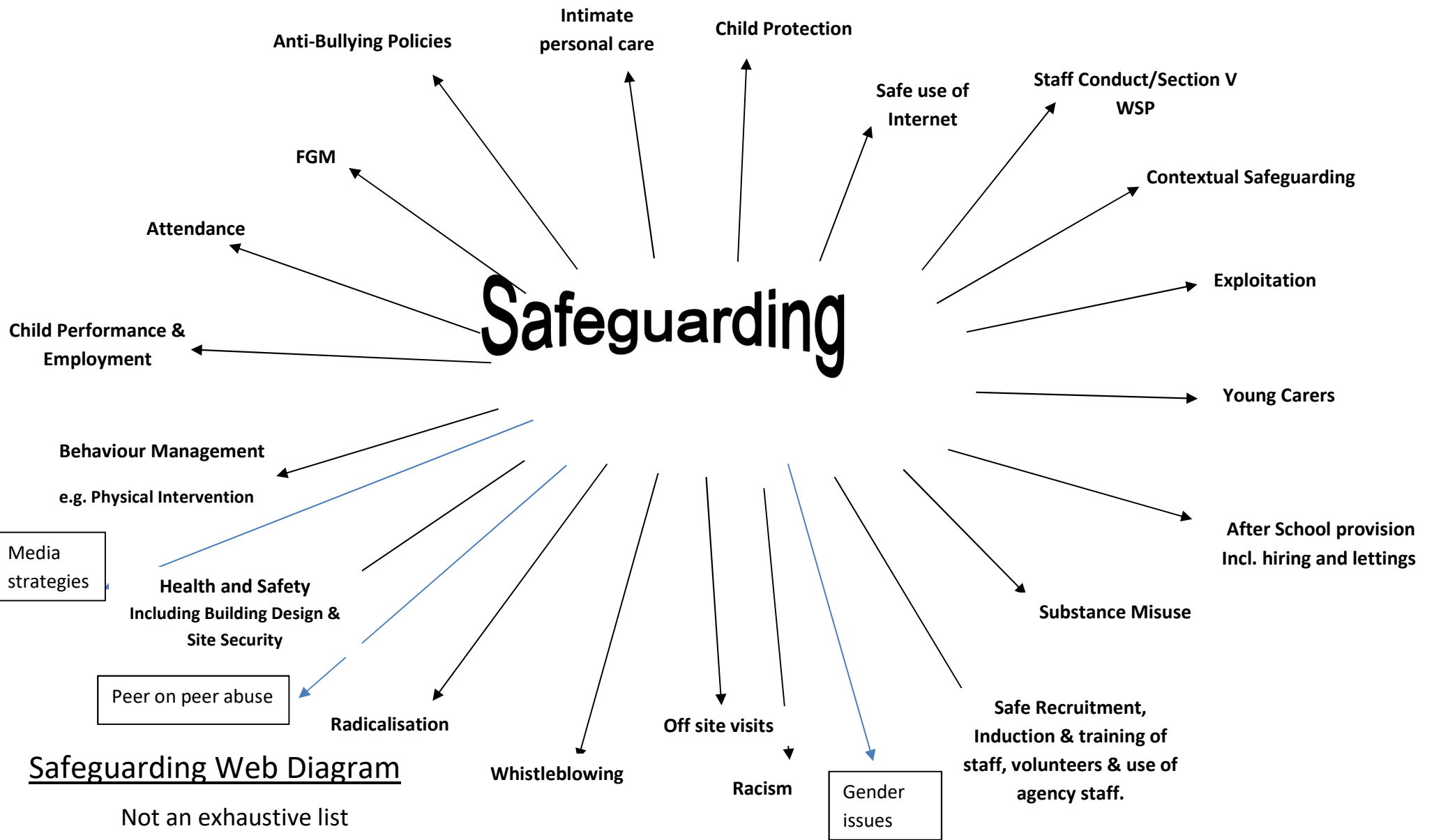
Nicola.Winstanley@cardiff.gov.uk 07977 061760

INDEX

INTRODUCTION	Page 6
AIM	Page 6
PREVENTION	Page 7
PROCEDURES	Page 8
TRAINING	Page 9
RECOGNISING CHILD ABUSE	Page 10
TAKING ACTION AND MAKING A REFERRAL	Page 12
DEALING WITH DISCLOSURES	Page 13
ATTENDANCE AT CHILD PROTECTION CONFERENCES & CORE GROUPS	Page 15
RECORD KEEPING	Page 15
CONFIDENTIALITY	Page 17
SUPPORT TO PUPILS	Page 18
ADDITIONAL VULNERABILITY FOR CHILDREN AND YOUNG PEOPLE	Page 19
PREVENTING UNSUITABLE PEOPLE FROM WORKING WITH CHILDREN	Page 17
ALLEGATIONS AGAINST STAFF IN THE SCHOOL SETTING	Page 19
SAFEGUARDING ALLEGATIONS / CONCERNS ABOUT PRACTITIONERS AND THOSE IN POSITIONS OF TRUST	Page 22
WHISTLEBLOWING	Page 22
OTHER RELATED POLICIES	Page 22
EXTENDED SCHOOL & OUT OF SCHOOL HOURS	Page 23

APPENDIX / DOCUMENTS

RECORD OF CONCERN	Page 31
CHILD PROTECTION RECORD LOG	Page 32
DAILY CONTRACTOR LOG	Page 33
VULNERABILITIES AND RISKS TO SEXUAL EXPLOITATION	Page 34
CHILDREN MISSING EDUCATION	Page 35
SCHOOL CLUBS	Page 38
LIST OF SUPPORTING DOCUMENTS	Page 52
Appendices	p39
1. Children and young people missing from education	p39
2. Movement of children form	p40
3. Leaving School – form for parents	p41
4. Elective home education	p42-43
5. Body map	p44-46
6. Safeguarding adolescents from exploitation (SAFE)	p47-51



Safeguarding Web Diagram

Not an exhaustive list

Introduction

“We all share a responsibility for safeguarding and promoting the welfare of children and young people, whether as a parent, or family member, a friend or neighbour, an employer or as a paid or volunteer worker. All members of the community can help to safeguard and promote the welfare of children and young people and should act to do so if they have concerns about a child’s welfare” Safeguarding Children: Working Together under the Children Act 2004”

Safeguarding and protecting is everybody’s responsibility

Welsh Safeguarding Procedures 2019 for Children at risk of Abuse and Neglect (2019)

- St Bernadette’s acknowledges the importance of its role in the wellbeing and safety of young people, and this ethos is promoted throughout the school.
- St Bernadette’s is committed to ensuring the safety and protection of all children and will take action to safeguard their wellbeing.
- St Bernadette’s will work with multi-disciplinary partners within the statutory framework established by:
 - Wales Safeguarding Procedures
 - Safeguarding Children: Working Together Under the Children Act 2004 Section 28
 - Education Act 2002 Section 175 – Schools have a statutory duty to ensure arrangements are in place to safeguard and promote the welfare of children
 - Section 5 of the WSP Safeguarding Allegations/concerns about practitioners and those in positions of trust.
 - Welsh Government Guidance 0900/2014 Handling Allegations Against Teachers & Staff – under review
 - Keeping Learners Safe New Guidance 275/2021
 - The Counter – Terrorism and Security Act 2015
 - Social Services and Well-being (Wales) Act 2014 – **duty to report**
 - Cardiff and Vale Regional Safeguarding Board
 - Welsh Government Guidance for Governing Bodies on the Disciplinary and Dismissal Procedures for School Staff (revised 2020 replaces 2013)

The child protection policy applies to all staff, including supply staff and volunteers including community education staff and governors, Teaching assistants, mid-day supervisors, supply staff, administrative and support staff: all staff as well as teachers can be the first point of disclosure for a child. Concerned parents may also contact the school or governors.

The policy will be reviewed annually taking into account feedback from Governing Bodies and Schools and any new policy documentation or guidance.

Aim

We, St Bernadette’s Catholic Primary School aim to provide an environment in which children and young people feel safe, secure, valued and respected and feel confident, and know how to approach adults if they are in difficulties knowing they will be listened to.

Our aims are to:

- Provide a safe environment for children/young people in which to learn;
- Establish what actions the school can take to ensure that children/young people remain safe at home as well as at school;
- Raise the awareness of all staff to these issues, and to define their roles and responsibilities in reporting possible cases of abuse;
- Identify children/young people who are suffering, or likely to suffer, significant harm;
- Ensure effective communication between all staff on child protection issues;
- Set down the correct procedures for those who encounter any issue of child protection.

At St Bernadette's, we have separate policies within which we aim to address many of the above areas. We have a Health & Safety Policy that addresses first aid, pupil welfare and educational visits; we also have a separate Anti Bullying Policy, Behaviour Policy, Equality Policy, Use of Reasonable Force Policy, Administration of Medicine Policy, Educational Visits Policy, EPR Policy, On-Line Safety Policy, Security Policy, Whistle blowing Policy, Staff have also undertaken On-Line safety, Violence against Women, Domestic Abuse and Sexual Violence training

There are 4 main elements to our policy in implementing the above aim:

1. **Prevention** through the teaching and pastoral support offered to pupils and the creation and maintenance of a whole school safe environment where children know who to approach with any concerns about their welfare.
2. **Procedures** for identifying and reporting concerns about the welfare of a child.
3. **Support To Pupils** who have/ may have been abused
4. **Preventing Unsuitable People Working With Children** through robust vetting and recruitment processes

Prevention

We, St Bernadette's Catholic Primary School recognise that high self-esteem, confidence, supportive friends and good lines of communication with a trusted adult help to protect children and adults.

The school will therefore:

Establish and maintain an ethos where everybody feels secure and are encouraged to talk, and are listened to.

- Ensure children and adults know that there are people in the school whom they can approach if they have concerns about their welfare, are worried or in difficulty
- Include in the curriculum activities and opportunities for Personal, Social and Education (PSE) which equip children and adults with the skills they need to stay safe from abuse and information about who to turn to for help;
- Include in the curriculum material which will help children develop realistic attitudes to the responsibilities of adult life particularly with regard to child care, healthy relationships and parenting skills
- Establish effective working relationships with parents and colleagues from partner agencies.

Procedures

This policy has been reviewed in line with the Wales Safeguarding Procedures.

Roles and Responsibilities

Child Protection is everybody's business; however, staff within St Bernadette's Catholic Primary School will have specific responsibilities' which are outlined below.

- It is the role of the Designated Senior Person for Child Protection (DSP) to ensure that all of the child protection procedures are followed within the school, and to make appropriate and timely referrals in accordance with school procedures.
- If for any reason the DSP is unavailable, a **Deputy DSP** has been identified who will act in their absence. Alternative arrangements for appropriate cover will also be made if the DSP and Deputy are unavailable.
- It is the role of the DSP to ensure all staff employed including temporary staff, agency staff and volunteers within the school are aware of the school's internal procedures, for advice, support and guidance.
- The Governing Body and school leadership team are responsible for ensuring that the school follows safe recruitment and best practice
- The role of the Nominated Governor for Child Protection is to ensure that the school has an effective policy and to support the school develop and implement the policy: the Governing Body has a key role as critical friend in understanding and challenging the safeguarding arrangements within the school
- The DSP/Headteacher and Governing Body should review and update the policy and procedures annually.
- The DSP/Headteacher should ensure that Safeguarding training is undertaken by all staff, volunteers and governors annually.
- Ensure parents are aware of the child protection policy and understand the school's duty to report Child Protection concerns to Children's Services
- Where children leave the school ensure that any child protection information is shared with the receiving school. Child Protection files are copied and the copies are securely transferred to the new establishment as soon as possible but transferred separately from main pupil file. The original being retained securely in school.
- Whilst waiting for information to arrive DSP to have a telephone conversation with DSP at previous establishment to discuss any immediate concerns

Schools Governing Body

The Schools Governing Body is responsible for the following:

- The school has an effective child protection policy and procedures in place that is in accordance with local authority guidance and locally agreed interagency procedures
- The school's child protection policy and procedures are:
 - Available to parents and carers
 - Provided in a format appropriate to the understanding of children, and in particular for children with additional needs
- Ensure the school operates safe recruitment procedures that take account of the need to safeguard children and young people, including arrangements to ensure that all appropriate checks are carried out for new staff and volunteers who will work with children, including relevant DBS checks

- Ensure that the head teacher and all other permanent staff and volunteers who work with children undertake appropriate training to equip them with the knowledge and skills that are necessary to carry out their responsibilities for child protection effectively: and is kept up-to date by refresher training
- Give clear guidance to temporary staff and volunteers providing cover during absences and who will be working with children and young people on the school's arrangements for child protection and their responsibilities
- Ensure that the governing body addresses any identified learning regarding child protection arrangements in line with its reviewing and monitoring responsibility, and any issues that are brought to its attention.
- The governing body to ensure that the designated senior person (DSP), Designated Governor for Child Protection and the Chair of Governors undertake and maintain relevant safeguarding training as agreed by the Regional Safeguarding Board.

Representatives from the Education Safeguarding Team (educationsafeguarding@cardiff.gov.uk) are available to offer advice, support and training to the school's DSP and Governing Body

Training

All staff, including teachers, teaching assistants, midday supervisors, caretakers, volunteers, admin staff, kitchen staff and Governors in the school must complete Corporate Safeguarding eLearning training (accessed via the Academy) and Child Protection Awareness Raising Level 2 Training, delivered by the DSP on an annual basis.

Child Protection training enables staff to;

- Understand the Safeguarding Agenda for schools and where Child Protection fits in it
- Understand key roles and responsibilities including who to report to in school and where safeguarding concerns are recorded
- Recognise signs and symptoms of abuse
- Know how to respond to a disclosure of abuse and how to make a referral
- Raise concerns about practitioners and persons in a position of trust.

The school operates a robust induction process for all new staff, supply and temporary staff and volunteers to ensure they understand their responsibilities for child protection including their duty to report. These individuals must be provided with an Induction booklet and a copy of the child protection policy. The induction booklet/leaflet should be signed and dated by the individual upon reading it.

The nominated DSP and Deputy DSP must also attend the Council's DSP training prior to undertaking this role and undertake DSP refresher training every three years. In addition, the DSP should consider specialist training *e.g. Team Teach, WRAP training* (this is not an exhaustive list). A record of all staff training must be held by the school.

Following this training the designated staff member should meet any further training standards outlined by Cardiff Council.

The DSP status is outlined in Welsh Government Statutory Guidance Keeping Learners Safe.

Recognising Child Abuse

Teachers and other adults in schools are particularly well placed to detect signs of child abuse. It is important, therefore, that any case of suspected abuse or neglect is taken seriously and that there is a clear system of communication within schools and with relevant partner agencies.

The All Wales Safeguarding Procedures identify five categories of abuse:

- **Physical Abuse**
- **Emotional/Psychological Abuse**
- **Sexual Abuse**
- **Financial Abuse**
- **Neglect**

Definitions of Child Abuse and Neglect

The Children Act 1989 and 2004 and Social Services and Well-being (Wales) Act 2014 defines abuse as follows; *'A child is abused or neglected when somebody inflicts harm, or fails to act to prevent harm. Children may be abused in a family or in an institutional or community setting, by those known to them or, more rarely, by a stranger. A child or young person up to the age of 18 years can suffer abuse or neglect and require protection via an inter-agency child protection plan'*

- **Physical Abuse**
Hitting, slapping, over or misuse of medication, undue restraint, or inappropriate sanctions;
- **Emotional/Psychological Abuse**
Threats of harm or abandonment, coercive control, humiliation, verbal or racial abuse, isolation or withdrawal from services or supportive networks, witnessing abuse of others
- **Sexual Abuse**
Forcing or enticing a child or young person to take part in sexual activities, whether or not the child is aware of what is happening, including: physical contact, including penetrative or non-penetrative acts; non-contact activities, such as involving children in looking at, or in the production of, pornographic material or watching sexual activities or encouraging children to behave in sexually inappropriate ways
- **Financial Abuse**
This category will be less prevalent for a child but indicators could be:
 - not meeting their needs for care and support which are provided through direct payments; or
 - complaints that personal property is missing
- **Neglect**
Failure to meet basic physical, emotional or psychological needs which is likely to result in impairment of health or development.
Risk from other actual or potential harm to a child or young person may also result from:

- Criminal exploitation such as county lines (CCE)
<https://www.safeguarding.wales/chi/c6/c6.p1.html>
- Child sexual exploitation
<https://www.safeguarding.wales/chi/c6/c6.p10.html>
- Radicalisation
<https://www.safeguarding.wales/chi/c6/c6.p6.html>
- Female genital mutilation
<https://www.safeguarding.wales/chi/c6/c6.p2.html>
- Modern slavery
<https://www.safeguarding.wales/chi/c6/c6.p3.html>
- Honour Based Abuse
[Social care Wales \(safeguarding.wales\)](https://www.safeguarding.wales/)

Taking Action and Making a Referral

Abuse or the suspicion of abuse may come to your attention as a result of:

- A disclosure (written or verbal)
- Observation of bruises/burns etc. for which the explanation given is not plausible
- Another pupil/parent may give you information
- You may observe changes in behaviour that worry you
- You may instinctively feel something is wrong
- There are neglect issues, as outlined in the section above.

Where a member of staff has concerns about the welfare of a child they should **immediately** report their concerns to the DSP (or deputy DSP), who will appropriately consider the concern and what actions, if any, should be taken.

- The DSP may seek advice from telephoning Cardiff Multi Agency Safeguarding Hub (MASH) making clear it relates to a child protection matter to ensure the call is prioritised. The DSP should seek clarity on the safety plan e.g. is the child safe to go home. Following advice from MASH any referrals must be submitted within 24 hours.
- Please note, if DSP is aware the child has an allocated Social Worker within a Locality Team, the DSP should make that Social Worker/ Duty Worker aware immediately and a MARF should be submitted to MASH, copying in the Social Worker.
- The DSP may seek advice from The Gateway in relation to matters of child's/family's wellbeing
- Professionals cannot remain anonymous when making a referral. Where the DSP is advised a referral is not required but in their professional judgement it is required a referral should be submitted.
- When making a referrals parental consent should be sought, unless to do so poses a risk of harm to the child. It will be for Children's Services at MASH to determine whether the threshold for invoking Child Protection procedures is met. Record all actions taken in accordance with your DSP responsibilities and duty to report including any advice given.
- If a member of staff is informed that a child has disclosed that he/she has been abused, the member of staff **MUST IMMEDIATELY** refer the matter to the DSP or Deputy or in the absence refer direct to MASH.
- The DSP should be immediately notified of all referrals made by staff to the Cardiff MASH during her absence.

- If there are concerns of a Child Protection nature and the child is **about to leave the school premises** the Headteacher should be informed. The Headteacher, in consultation with the Cardiff MASH, will decide on the next step to be taken.
- DSPs/Schools staff should receive a response to their referral in writing within 7 working days. If not received after 7 days, DSPs should contact Cardiff MASH for an update.
- It is important that staff follow up with the DSP what action, if any, has been taken following a disclosure or concern. Staff will be informed of relevant information in respect of individual cases regarding child protection on a “need to know basis” only. Any information shared with a member of staff is confidential and must not be shared. If the member of staff has continued concerns, then the Headteacher should be notified or Chair of Governors if the Headteacher is the DSP. The member of staff may also report their concerns to Cardiff MASH or the Education Safeguarding Team.
- If the individual reporting the concern disagrees with the DSP’s decision that a referral is not necessary, they must make the referral directly to the Cardiff MASH and inform the DSP of this. Advice and support can be sought from the Education Safeguarding Team as required.

This school recognises it has a duty to report child protection concerns and not to investigate

If a child in school has an injury and there is reason to believe that it has been caused by abuse or neglect, the following action should be taken.

- If the injury is serious and warrants urgent medical attention, the child should be taken to the Casualty Department. In an emergency the 999 service should be used.
- Cardiff MASH must be informed of this course of action **IMMEDIATELY** as they may wish to make arrangements for the child to be examined by a Paediatrician on arrival at Hospital. It should be made clear that it is a case of suspected child abuse or neglect.
- In cases where there is reasonable cause to believe that the injury or abuse is caused by the parent or carer, all staff must remember that the interests of the child are paramount and should, therefore, discuss their concerns with the Cardiff MASH team or Police who will make the decision as to when the parents/carers will be notified.

Dealing with Disclosures

What to do if a child tells you that they are being harmed

Children who experience abuse may seek to ‘tell’ in school, often because this is a place where they feel safe, secure and listened to.

- Take time to listen to the child, this will show you are taking their concerns or allegations seriously.
- Never make a promise that you will keep what is said confidential or secret –reassure them and explain your duty to report such concerns and what will happen next

If a child chooses to disclose harm to a staff member it must be remembered that the school role is to recognise and refer the abuse, not to investigate. However, this does not mean that the staff member receiving the concern cannot fact find.

In some instances, a disclosure of harm or injury is clear and no further questions need to be asked in order to recognise the abuse and make an appropriate referral.

Where a child is felt to be making a possible disclosure or has a suspicious injury it would be justified for staff to ask enough questions of the child in order to clarify whether there is a child protection concern. These should be open and non-leading. Do not speculate or proffer an alternative explanation.

You may wish to use the acronym **'TED'** as a good tool to encourage the child to 'Tell', 'Explain' and 'Describe' the concern.

"Tell me about"

"Explain that to me"

"Describe to me"

If it is necessary to clarify any further, staff should keep to open questions such as What? When? Who? How? Where? It is important to remember that questions should only be asked to help clarify whether the child is at risk of harm. Once clarification is achieved, no further questions should be asked.

- Do not interrupt when the child is recalling events and do not make the child repeat themselves.
- As soon as possible after the disclosure, record in writing on the MyConcern site what was said. Be as accurate as possible, using the child's own words and language e.g. Welsh, Urdu etc. Include in your record the time and date of the disclosure, and whether anyone else was present. Make a note of the child's demeanour (be specific about how the child is behaving/reacting e.g. crying as opposed to just saying upset). Make a note of any action taken following the disclosure. Use the Record of Concern (Document 1) as a point of reference.
- The information will be confidentially stored on the MyConcern site and automatically sent to the DSP and deputy DSP who will decide if or what actions need to be taken next
- Immediately inform the DSP and do not tell other adults or young people what you have been told.
- As soon as possible (and certainly the same day) the DSP should refer the matter to the Cardiff MASH. Follow their advice about what to do next. Staff should keep in mind at all times their role is to assist the Police and Children's Services and NOT to undertake their own investigations unless directed to do so
- Referrals should be strength based following the signs of safety (SoS) approach as outlined on the referral form
- If DSP is unable to get in contact with MASH through the landline they must email CSMash@cardiff.gov.uk
- Do not worry that you might be mistaken; you have a responsibility to pass on your concerns following disclosure of abuse or neglect. Never think abuse is impossible in your organisation or group, or that an accusation against someone you know well and trust is bound to be wrong.

It is important that you

<u>DO</u>	<u>DO NOT</u>
<ul style="list-style-type: none">● Keep an open mind● Reassure the child that they have a right to tell● Listen carefully● Work at the child's pace● Ask only open questions – if you must ask them, clarify the facts, don't interrogate● Explain what you need to do next● Record accurately and quickly using the child's words● Pass on to DSP same day	<ul style="list-style-type: none">● Promise to keep secret what they are telling you● Interrupt● Interrogate/investigate● Assume e.g. this child tells lies● Make suggestions about what is being said● Speculate or accuse anyone● Show anger, shock etc....● Tell the child to go and speak to someone else● Forget to record accurately and/or pass on to DSP● Confront alleged abuser

Attendance at child protection conferences & core groups

It is the responsibility of the DSP to ensure that the school is represented at any child protection conference for children on their school roll or previously known to them.

The DSP or Deputy should be fully briefed on any issues or concerns the school has and must present their report during the meeting and be prepared to make decisions on registration at the end of the conference. Reports to be sent to conference chair/co-ordinator three days prior to the conference. The contents of the report should also be shared with the parents ahead of the conference and where appropriate, the child/ren concerned.

When a child is placed on the Child Protection Register and is, therefore, subject to a child protection plan, it is the DSP's responsibility to ensure that the child is monitored regarding their school attendance and wellbeing and that the Child Protection Plan is progressing as a member of the core group.

School will always be part of the Core Group if child is of school age. DSP should ensure that the school is represented at these meetings; that there is a record of attendance and issues discussed. Any representative of the core group can take on the Chair role if nominated to do so. It will be the chair's responsibility to ensure the distribution of minutes are sent to all core group members.

All concerns about the child protection plan and / or the child's wellbeing should be discussed and recorded at the core group meeting. Where there are concerns that the child is at further risk of significant harm, the DSP must inform the child's social worker **immediately** and then record that they have done so and the actions agreed.

The school will notify Children's Services if:

- a pupil on the CP register is excluded whether for a fixed term or permanent exclusion; and
- there is an unexplained absence of a pupil on the CP register of more than two days duration from school (or one day following a weekend)
- if there is concern that children subject to CP plan go missing

If a school is concerned about case drift for a child on the Child Protection Register, they should speak to the social worker/ team manager in the first instance. If concerns continue, escalate to the conference chair.

Record Keeping

Any member of staff receiving a disclosure of abuse or neglect from a child/ young person, or noticing signs or symptoms of possible abuse or neglect in a child /young person should record these disclosures or observations on MyConcern as soon as possible.

MyConcern

MyConcern safeguarding software is used by the school and also by the LA's Youth Service and EOTAS team. It is a simple and safe system for recording and managing all safeguarding, pastoral and wellbeing concerns.

Staff record and manage any safeguarding concerns as they occur. Integrated with SIMS, MyConcern pulls through the relevant student information across from SIMS to create the student profile in MyConcern. Automatic notifications are sent to the designated safeguarding lead when any new concerns are added by users.

MyConcern allows schools to facilitate joint working and information sharing with trusted partners and colleagues such as the school's Youth Mentors or a child's social worker, by adding them as team members to a specific concern or student profile in MyConcern. This promotes a complete picture of an individual's well-being and enables the relevant team members to act when required without having to send additional updates by email.

Documents, minutes, MARFs and other referral forms and other types of media can be uploaded and linked to the pupil's record. This minimises the need for paper records and centralises all relevant and supporting information. It enables schools to manage and prioritise actions and evidence the effectiveness of safeguarding arrangements to Estyn, Governors and Senior Leaders and drive improved outcomes for students.

Reports can be created on any combination of categories of concern or student information over a fixed or dynamic time period. Typical reports schools can run include a breakdown of 'total concerns by month', 'concerns by category', 'termly governor report' etc.

MyConcern in partnership with the LA schedule webinars for DSPs throughout the year, any topics staff would like included or have any queries about the LA contact for My Concern is Sian Cadwalladr: scadwalladr@cardiff.gov.uk

St Bernadette's uses the online site 'MyConcern' for staff to log any safeguarding reports of individual pupils. Staff have been trained on how to access the website. The DSP and Deputy DSP are emailed with all concerns logged.

Only the DSP and Deputy DSP have full access to records on MyConcern. Any concerns need to be reported to the DSP/Deputy DSP immediately.

Members of staff have all been given their individual login details to MyConcern' and only have access to see what they have written. Reports can be written straight on to MyConcern. Midday supervisors who do not have access to MyConcern will be expected to write their report on a blank disclosure/report/concern form and a member of staff will upload to the website. Blank documents including multiagency referral forms, referral consideration forms and blank reports for Child Protection Conferences can all be accessed from the Resource area of MyConcern

Previous recordings (prior to MyConcern being used March/ April 2018) are kept securely and confidentially in the Child Protection File.

- Dates and times of events should be recorded as accurately as possible, together with a note of when the record was made. This should be signed and dated and given to the DSP for his or her attention to decide on further actions.
- All documentation/records relating to child protection concerns should be placed on the child's individual Child Protection file and securely stored. Document 2 Record Log should be filed at the beginning of each CP file and used as a chronology to log events, meeting or contacts etc.
- When a child who is on the child protection register leaves the school the DSP will inform the child's new school immediately.

- If a child leaves the school for and other establishment, does not have a child protection file, but there have been safeguarding concerns then this should be shared with the new establishment.
- The DSP will inform Children's Services/social worker of significant changes to the child protection plan or family circumstances.
- If a child has a Child Protection file and moves school (either mid-year transfer or transition from Nursery to Primary or to High School), the DSP will inform the new school of the child protection concerns.

Furthermore, the DSP will ensure;

- Child Protection records MUST be held indefinitely at present whilst the Independent Inquiry into Child Sexual Abuse (IICSA) is ongoing. More information can be found on the IICSA website: IICSA Independent Inquiry into Child Sexual Abuse
- a copy of the Child Protection file is securely transferred to the new school (separate from the education file)
- Children's Services is advised of the change of school for a child on the CPR

Any allegations or concerns about professional's conduct is recorded separately from the child's record.

Schools have an equal responsibility to ensure that relevant documentation/information is shared in a secure and timely manner with all relevant safeguarding partners.

Confidentiality & GDPR

We recognise the importance for pupil information to remain confidential. However, sharing information is vital for early intervention to ensure that children and young people with additional needs get the services they require. It is also essential to protect children and young people from suffering harm from abuse or neglect and to prevent them from offending.

When sharing information, it must be shared in accordance with the GDPR and the Data Protection Act 2018, referred to as the UK's data protection legislation. **The GDPR and Data Protection Act 2018 do not prevent, or limit, the sharing of information for the purposes of keeping children and young people safe**

When sharing information, you will need to be satisfied that there is either

- A statutory duty to report
- Express or implied consent of the persons involved; or
- An overriding public interest in disclosing information.

One of the seven golden rules of sharing information is to consider is it; necessary, proportionate, relevant, adequate, accurate, timely and secure: ensure that the information you share is necessary for the purpose for which you are sharing it, is shared only with those individuals who need to have it, is accurate and up-to-date, is shared in a timely fashion, and is shared securely

[38137 Working together to safeguard people: Non-statutory guide on information sharing to safeguard children \(gov.wales\)](#)

All decisions to share or not share information should be recorded in writing and stored on the schools secure database.

You should seek advice from your DSP where you are in doubt, especially where your doubt relates to concern about possible significant harm to a child or serious harm to others. However, if you consider a child

to be at risk you should not delay seeking advice from Children's Services in the absence of speaking to the DSP.

Parents should be made aware that there is a statutory duty to safeguard and promote the wellbeing of children and that this responsibility necessitates child protection policy and procedures: that at times it may be necessary to share information with partner agencies when there are such concerns.

St Bernadette's Catholic Primary School regard all information relating to individual child protection issues as confidential and will treat it accordingly. Information will be passed on to appropriate persons only. The school will verify the identity of the person to whom the information is shared with. The child protection records are kept securely on the 'MyConcern' website. Old Child Protection files are stored in a secure and locked location.

Support to Pupils

We recognise that children who are abused or neglected or witness violence may find it difficult to develop a sense of self-worth, and this could impact on them in school. The school may be the only stable, secure place for these children and the school will support the pupil through:

- The content of the curriculum to encourage self-esteem and self- motivation.
- The school ethos which promotes a positive, supportive, and secure environment, and gives pupils a sense of being valued.
- The school's behaviour policy is aimed at supporting vulnerable pupils in the school. All staff will agree on a consistent approach which does not attribute blame for any abuse which has occurred.
- Liaison with other agencies within a multi-agency framework which support the pupil such as Children's Services, Child and Adolescent Mental Health Services, the Educational Psychology Service, Behaviour Support Services, The Pupil Support Services, and voluntary organisations.
- A commitment to develop productive and supportive relationships with parents/ carers in the pupil's best interest.

Additional Vulnerability for Children and Young People

The school recognises that there are groups of Children and Young People who are additionally vulnerable to abuse. We refer to Chapter 4: Safeguarding responsibilities in specific circumstances "Keeping Learners Safe" ref 275/2021 and the Wales Safeguarding Procedures.

Preventing Unsuitable People from Working with Children

Safer Recruitment

St Bernadette's Catholic Primary School operate recruitment and management procedures that take account of the need to safeguard children and young people including arrangements for appropriate checks on staff and volunteers that comply with the recruitment and volunteer policies.

St Bernadette's Catholic Primary School follow the Council's procedures for advertising, interviewing and recruiting staff, including the requirement for Barring and Disclosure Scheme (DBS) checks and consideration given to Chapter 5 & 6: Safer recruitment practice "Keeping Learners Safe" ref 275/2021 and up to date HR guidance. Please see the Council's recruitment and selection policy.

The Disclosure and Barring Service

St Bernadette's Catholic Primary School operate safe recruitment practices ensuring that all staff who have contact with children or access to information about children have appropriate DBS reference checks undertaken according to Welsh Government Circular No:158/2015 Keeping learners safe Chapter 6 and Cardiff Council's Disclosure and Barring Service (DBS) Policy 1.CM.202

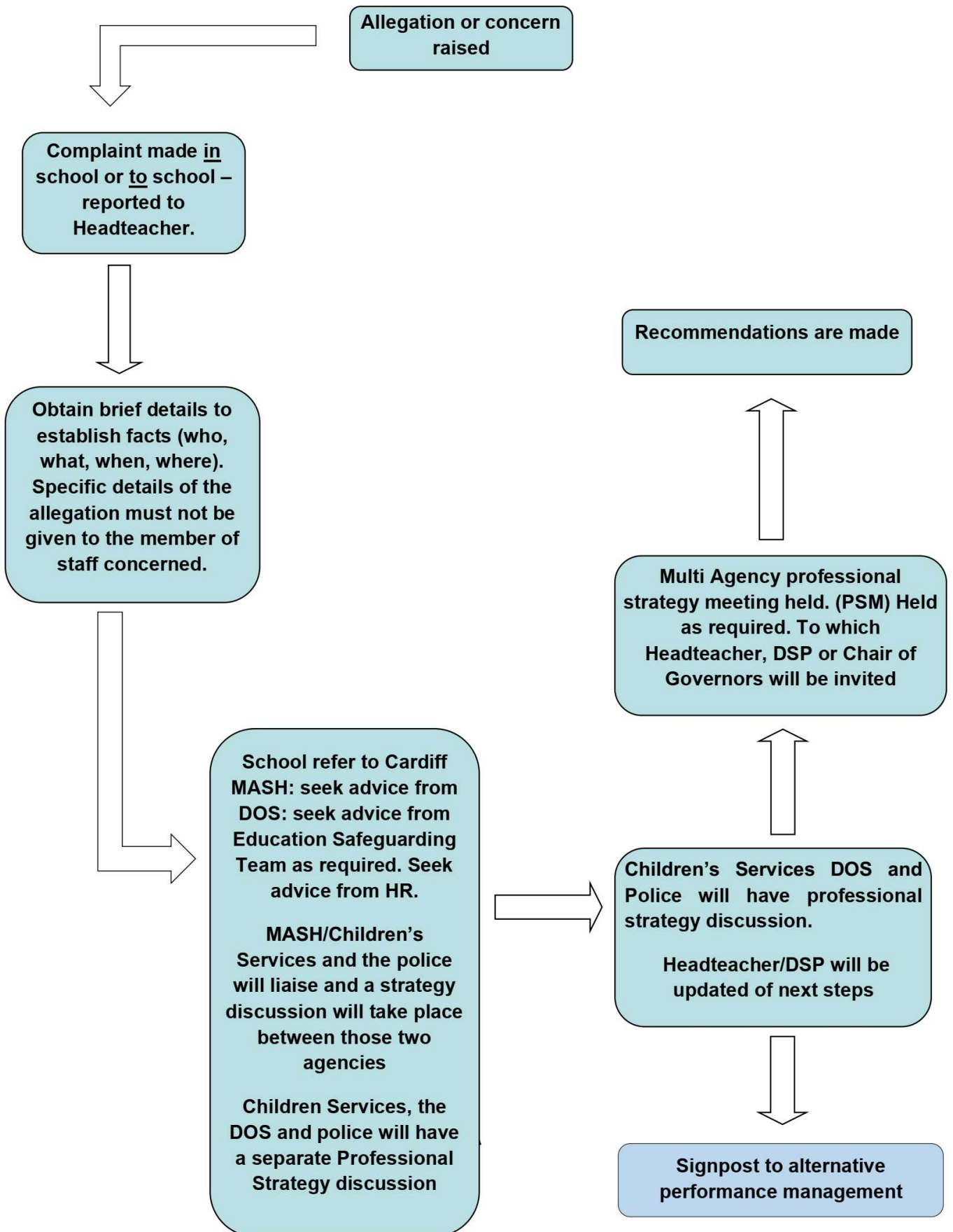
Allegations against staff in school setting

When there is a concern or allegation raised regarding any adult working or volunteering in the school including permanent, temporary or supply staff and their conduct towards a child, the following procedures must be undertaken.

It is important to remember that Practitioner concerns can apply in their personal and/or professional life. There can be safeguarding concerns other than that, resulting in harmful behaviour towards a child that may be give us cause for **concern about the suitability of an employee to work with children.**

- The Headteacher or Deputy Headteacher (in head's absence) of the school should be informed immediately.
- The Headteacher, Deputy Headteacher or DSP may wish to seek advice from the Education Safeguarding Team & Children's Services Designated Officer for Safeguarding (DOS) (Lynda Gallagher) or **Samantha Dickens**, Principal Social Worker in the Practitioner Concerns Team.
- Safeguarding concerns or allegations where there is an identified child must be reported to Cardiff Multi Agency Safeguarding Hub (MASH) or the Police without delay.
- Other conduct concerns (where there is no identified child) should be referred to the Practitioner Concerns Team via the Practitioners Concerns Report Form (email ProfessionalStrategy.Meetings@cardiff.gov.uk)
- The Headteacher, Deputy Headteacher or DSP (the reporter) should seek advice from Children's Services, Practitioner Concerns Team and/or Police in relation to what information about the allegation can be shared and with whom (i.e. what should the parents be told, what should the member of staff be told)
- The school must seek advice from Human Resources (HR) regarding the member of staff's continued employment during any investigation, and a risk assessment should be undertaken and recorded in writing immediately.
- If the allegation relates to supply staff, then please contact the agency directly to discuss next steps and agree any risk management plan.
 - It is the school's responsibility to submit a MARF/seek advice from Children's Services.
 - It is the school's responsibility to make the agency aware of the allegation to enable them to carry out a Risk Management Plan as the Agency employer.
 - It is the Agency's responsibility to complete a Practitioner Concerns Report and submit it to Professional Strategy Meetings / Cyfarfodydd Strategaeth Broffesiynol ProfessionalStrategy.Meetings@cardiff.gov.uk (if the incident has taken place in Cardiff/in a Cardiff school). This is to ensure the necessary details of their employee; relevant history of employment and feedback is provided. The agency should also highlight the Risk Management Plan as part of the report form.

- In the event of the allegation being made directly or indirectly about the Headteacher the staff member should immediately report the allegation to the Chair of Governors, who should raise the concern to the relevant Safeguarding Teams.
- A formal investigation including the questioning or interviewing of pupils/staff of the alleged incident must not take place unless Children's Services, DOS or the Police give instructions to do so. However, it is appropriate to ascertain facts (who, what, where, when) secure any CCTV footage and take narrative accounts in order to provide sufficient information to Children's Services or police.
- Any visible injuries should be recorded with the use of body maps (Appendix 5)
- The member of staff reporting this alleged incident must strictly adhere to confidentiality and not discuss the concerns with the person of concern or any other person other than the Headteacher unless the person of concern is the Head Teacher.



If schools decide not to take any further action they must record their rationale for this decision via their internal recording mechanisms. It is critical that their records are retained in case there is further or repeated concern, if schools are unclear about what action to take they must seek appropriate advice from the Designated Officer for Safeguarding (DOS)

Staff are responsible for their own actions and behaviour and should avoid any conduct which would lead any reasonable person to question their motivation and intentions. All staff should be aware that unlawful or unsafe behaviour will not be tolerated and that where appropriate legal or disciplinary action will be taken.

The school will ensure that all staff and volunteers are aware of the need for maintaining appropriate and professional boundaries in their relationships with pupils and parents as advised by the Local Authority's Code of Conduct, and the Education Workforce Council Professional Code of Conduct. [Code of Professional Conduct and Practice.](#)

<http://vmweb22.cardiff.gov.uk/cis/documentuploads/00825/016662/9694/5.C.014%20Code%20of%20Conduct.pdf>

<https://www.ewc.wales/site/index.php/en/documents/fitness-to-practice/157-ewc-code-of-professional-conduct-and-practice>

Safeguarding allegations / Concerns about Practitioners and Those in Positions of Trust

Procedures in respect of allegations of abuse against professionals, members of staff or volunteers in contact with children are outlined in the national guidance in *Safeguarding Children: Working Together under the Children Act 2004*, *Regional Safeguarding Board (RSB) Guidance* and section 5 of the *Wales Safeguarding Children in Education: Handling allegations of abuse against Teachers and other staff* Welsh Government 009/2014.

ii) Whistleblowing

We recognise that children cannot be expected to raise concerns in an environment where staff fail to do so.

All staff must be aware of their duty to report allegations or concerns about colleagues. In line with the Local Authorities Whistleblowing Policy Version 6.5 CIS 1.C.015

Other Related Policies

Physical Intervention / Restraint Policy

Use of Reasonable Force Policy

Our policy on physical intervention by staff is set out in a separate document, our '[Use of Reasonable Force Policy](#)' and is reviewed by the governing body. We acknowledge that staff must only ever use physical intervention /restraint as a last resort, and that at all times it must be the minimum force necessary to prevent injury to the pupil, themselves, another person or property. Good practice dictates that senior leaders should provide training for staff and consequently, schools are encouraged to seek refresher training for staff on an annual basis and more frequently as risk assessments dictate. The Policy requires schools to risk assess individual pupils where necessary and actively plan to reduce risk by using pupil specific positive handling plans.

<https://gov.wales/sites/default/files/publications/2018-03/safe-and-effective-intervention-use-of-reasonable-force-and-searching-for-weapons.pdf>

Anti Bullying

Our policy on bullying is set out in a separate document, our '[Anti-Bullying Policy](#)' and is reviewed annually by the governing body under the guidance set within 'Respecting Others' – Welsh Government Draft guidance document no: 246/2018 Date of issue: November 2018.

We acknowledge that to allow or condone bullying may lead to consideration under child protection procedures

Health and Safety - School Site Security

St Bernadette's Catholic Primary School is a safe and secure place for pupils to learn and develop social skills. The physical safety of pupils when on school site is of paramount importance. Access to the school site is strictly monitored and reviewed in line with the Local Authority guidance on the Health and Safety of school premises.

All daily contractors to our site are requested to sign in and out of school premises. They will clearly list the company for whom they work and the reason for their visit. As a daily contractor is unlikely to have a DBS disclosure available to be viewed by the school, an alternative method of risk assessment will be employed. A risk assessment is formulated by the School which clearly list the control measures employed by the school to safeguard pupils. Contractors will only have access to school after signing in this will be done electronically and will wear a contractor's lanyard. A paper copy of the Contractor Visitors Log (Document 3) will be used if necessary.

Our Health and Safety and Security Policies are set out in a separate document and are reviewed annually by the governing body. It reflects the consideration we give to the protection of our children both within the school environment and when away from the school when undertaking school trips and visits.

Consideration is also given to any After School Club Providers or clubs/groups that may be using school site provision outside of school hours.

Extended Schools and Out of School Hours

If the governing body/school provides extended school facilities or activities directly under the supervision of management of school staff, the school's arrangements for child protection as written in this policy shall apply.

"Where services or activities are provided separately by another organisation, the governing body will ensure that there is a clear written agreement confirming the provider concerned has appropriate policies and procedures in place in regard to safeguarding children and child protection, and there are arrangements to liaise with the school on these matters where appropriate"

Keeping Learners Safe – Hiring's and lettings, Corporate Safeguarding Policy, Safe Services section (b), paragraph 2.63

Whilst the above sets out responsibilities in specific circumstances there are additional and important considerations in relation to other specific child protection and safeguarding issues. Staff will refer to Chapter 4 Keeping Learners Safe where more sections apply to an individual pupil's circumstances if letting the premises to outside organisations.

Agreed by Headteacher



Agreed by Chair of Governors



Date of Issue: 15.9.23

Date ratified by Governors: 21.9.23

Date for Review: Sep 2024

Children with Statements of Special Needs/ Individual Development Plans

Our policy recognises that children with behavioural difficulties and disabilities may be vulnerable to abuse and may also have difficulty disclosing their experiences. Staff who deal with children with profound and multiple disabilities, sensory impairment and or emotional and behaviour problems need to be particularly sensitive to signs of abuse.

Children who enter the Looked after System

St Bernadette' Catholic Primary School recognises that children who enter the Looked after System are often the most vulnerable. The school's policy on Children Looked after (CLA) has been set out in a separate document in consultation with Education Directorate's Looked After Co-ordinator. [CLA Policy](#)

The Use of the Internet/ Social Media

Our policy on the use of the internet is set out in a separate document and is reviewed annually by the Governing Body. The guidance focuses on the personal safety and well-being of pupils in the school and sets out a number of points to clarify the potential hazards and steps that staff can take to minimise the risks associated with internet usage.

Any attempt by a child/young person to contact staff via such internet sites will immediately be reported to the Head teacher in order that appropriate advice can be given to the child/young person and their parents/carers regarding professional boundaries and the safety of the child/young person. [On-Line Safety Policy](#)

The school's social media account, Twitter is monitored regularly to assure safe and appropriate use by both staff and pupils.

Staff will have regard to the Cardiff Council ICT Protocol for Schools and Cardiff Council's Social Media and Online User Policy.

If the school is made aware of a safeguarding concern linked to social media use we will follow usual policy and procedures. Specific guidance on sharing nude images guidance can be accessed through Hwb.

[Sharing nudes and semi-nudes - Hwb \(gov.wales\)](#)

[Rhannu delweddau noeth a hanner noeth - Hwb \(gov.wales\)](#)

<http://vmweb22.cardiff.gov.uk/cis/viewdocument.php?id=52339>

<http://vmweb22.cardiff.gov.uk/cis/viewdocument.php?id=66639>

<https://www.ewc.wales/site/index.php/en/documents/fitness-to-practice/good-practice-guides/194-social-media-do-you-use-it-responsibly?highlight=WyJzb2NpYWwiLCInc29jaWFsliwibWVkaWEiLCJzb2NpYWwgWVkaWEiXQ==>

<https://hwb.gov.wales/zones/keeping-safe-online/sharing-nudes-and-semi-nudes-responding-to-incidents-and-safeguarding-children-and-young-people>

The Use of images

Our policy on the use of pupils' images is set out in the On-Line Safety Policy. Photographic and video Images of children may be recorded for a variety of purposes. Staff will be required to take pictures of pupils for curriculum purposes, extra school activities, publicity and celebrating achievement.

The guidance highlights that particular care should be taken regarding the use of images which may include Looked After Children or children of other vulnerable groups, for example asylum seekers.

Every parent/carer must be requested to give specific consent for any image of their child to be recorded.

It is recommended that when using a photograph the following guidance should be followed:

- If the photograph is used, avoid naming the child
- If the child is named avoid using the photograph
- Establish and record whether the image will be retained for further use
- Images are stored securely and used only by those authorised to do so they should be available for scrutiny to ensure acceptability.

Guidance is available at CIS "[Safe Use of Pupils Images – Best Practice Guidance for Schools](#)" together with template consent form.

Staff should never use their own personal equipment to capture images.

<http://vmweb22.cardiff.gov.uk/cis/viewdocument.php?id=59237>

Teenage Pregnancy

If a pupil below the age of 13 discloses that they are pregnant (or thinks they may be pregnant) a MARF will be required. Staff are advised to follow the [Fraser Guidelines](#) when discussing personal or sexual matters with a young person under 16.

The Fraser Guidelines give guidance on providing advice and treatment to young people under 16 years of age.

Staff should assess the pupil's competency to give consent and of the nature of the relationship (Family gateway Service may be able to support the young person in accessing support through Early Help Team).

Whether it is appropriate to share information with parents and carers should always be considered as part of the assessment and based on what is in the child's / young person's best interests.

Wherever possible we would encourage the young person to inform their parent/carer. However, this may be discouraged if the parent being informed would place the child at risk of harm.

In any situation of uncertainty, where a member of staff is unsure of the course of action to take then consult with MASH or Education Safeguarding Team.

A MARF would be REQUIRED if there was a concern that the child and/or unborn child was at risk of harm or the child is under 13.

Domestic abuse, gender-based violence and sexual violence

Definition

The Violence against Women, Domestic Abuse and Sexual Violence (Wales) Act 2015 sets out that:

- “abuse” means physical, sexual, psychological, emotional or financial abuse.
- “domestic abuse” means abuse where the victim of it is or has been associated with the abuser.
- “Gender-based violence” means— a) violence, threats of violence or harassment arising directly or indirectly from values, beliefs or customs relating to gender or sexual orientation; b) female genital mutilation; c) forcing a person (whether by physical force or coercion by threats or other psychological means) to enter into a religious or civil ceremony of marriage (whether or not legally binding)
- “Violence against women”, should be read as also including male victims of gender-based violence (GBV) unless the context suggests otherwise.

Response

School recognises there is a strong link between domestic abuse and the abuse and neglect of children, and the impact on the child’s attendance and academic achievements.

Staff at St Bernadette’s have been trained to recognise the signs of Violence against Women, Domestic Abuse and Sexual Violence in L1 VAWDASV. HT completed L2 training - March 2021. There is a ‘Duty to Report’ on every individual if a person is at risk. School staff are trained (VAWDASV) and to ‘ask and act’ where they suspect a child, parent/carer or member of staff may be affected by this, through a sensitive and open approach.

St Bernadette’s is working towards an ‘Ask and Act’ culture where addressing violence against women, domestic abuse and sexual abuse is an accepted area of business and where disclosure is supported, accepted and facilitated

Schools can signpost those affected to specialised support through either the Live Fear free helpline (0808 80 10 800) or directly to Cardiff Specialist support services.

In any situation where staff have cause to believe that a pupil is at risk from, is the subject of, or is living in a household with violence or abuse, the DSP must be informed immediately and action taken in accordance with child protection procedures.

Further information can be sought from Violence against women, domestic abuse and sexual violence (Wales) Act 2015. Welsh Government Whole Education Approach Good Practice Guide.

Female Genital Mutilation (FGM)

FGM constitutes physical and emotional abuse to children – it is an illegal and extremely harmful practice. School recognises its mandatory duty to report known cases of FGM in under 18-year-olds to the police in line with its duty to report: this may be following a disclosure or where a staff member has observed physical signs of FGM.

In situations where an adult discloses that a pupil has had FGM or a member of staff suspects that a child may have FGM or is at serious or imminent risk of FGM then immediate advice will be sought from Cardiff MASH and liaison with Children’s Services and/or police.

Further guidance is available from:

[Mandatory reporting of female genital mutilation: procedural information - GOV.UK \(www.gov.uk\)](https://www.gov.uk)

Schools should familiarise themselves with the recent statutory guidance and the introduction of the new ‘duty to report’ requirements.

Operation Encompass

As a school we registered alongside all Cardiff schools as partner for Operation Encompass. Under Operation Encompass schools will be contacted by colleagues from the Local Authority Education Department advising of incidents of Domestic Abuse/Domestic Violence within 24 hours. This will enable school staff to consider safety and well-being supported provided for the children involved in these occurrences.

Please see the below hyperlink for further information

https://www.operationencompass.org/SM4/Mutable/Uploads/medialibrary/Operation-Encompass-Safeguarding-Statement_1.docx

Radicalisation/Extremism

What is Prevent?

Prevent is part of the UK's counter terrorism strategy (CONTEST), to safeguard and support those vulnerable to radicalisation and to stop them becoming involved in terrorism or supporting terrorism.

Statutory duties for schools

The school is aware of its responsibilities (under Section 26 of the Counter Terrorism and Security Act 2015 and the Prevent Duty Guidance) to safeguard pupils at risk of radicalisation.

The school does this by:

- Providing a safe environment for pupils to talk and debate controversial issues that may concern them, including sensitive topics such as terrorism and extremist ideology. This should be supported further by the development of critical thinking skills to aid resilience to extremist narratives
- Identifying and risk assessing individuals who may be drawn into terrorism, violent or non-violent extremism. This includes having a clear picture of the threat & risk picture in the school locality and the wider city
- Ensuring children are safe from terrorist and extremist material when accessing the Internet at school, including having in place appropriate levels of filtering, which are controlled by central Cardiff IT department
- Ensuring all staff receive appropriate level of *Prevent* training (Workshop to Raise Awareness of Prevent (WRAP) and have the knowledge and confidence to identify pupils at risk of being drawn into terrorism and extremism and challenge extremist ideas
- Knowing how to complete a Channel referral and how to work in partnership with statutory and non-statutory agencies to seek support for the child/young person

Definitions used within Prevent:

- **'Extremism'** is defined in the 2011 *Prevent* strategy as vocal or active opposition to fundamental British values, including democracy, the rule of law, individual liberty and mutual respect and tolerance of different faiths and beliefs. We also include in our definition of extremism calls for the death of members of our armed forces, whether in this country or overseas.
- **'Non-violent extremism'** is extremism, as defined above, which is not accompanied by violence.
- **'Radicalisation'** refers to the process by which a person comes to support terrorism and extremist ideologies associated with terrorist groups.
- **'Terrorism'** the threat or use of serious violence against a person, serious damage to a property, endangering a person's life, creating a serious risk to the health and safety of the public, or serious disruption to the electronic network

REFERRAL TO PREVENT

A referral to Prevent is submitted via the All Wales Prevent Referral Form.

[All Wales Prevent Partners Referral Form – English \(south-wales.police.uk\)](https://south-wales.police.uk)

Any referral into Prevent must also be accompanied by a Multi-Agency Referral Form (MARF) submitted into MASH.

Channel Panel

The Channel Panel is a multi-agency panel consisting of Prevent staff from both Cardiff Council and statutory partners including Education, Health, Social Services & a host of other partners.

Channel may be appropriate for anyone who is vulnerable to being drawn into any form of terrorism. Channel is about ensuring that vulnerable children and adults of any faith, ethnicity or background receive support before their vulnerabilities are exploited by those that would want them to embrace terrorism, and before they become involved in criminal terrorist activity.

Channel is a programme which focuses on providing support at an early stage to people who are identified as being vulnerable to being drawn into terrorism. The programme uses a multi-agency approach to protect vulnerable people by:

- identifying individuals at risk
- assessing the nature and extent of that risk
- developing the most appropriate support plan for the individuals concerned

Contextual Safeguarding

Schools recognise that abuse can take place outside of a child's family and is known as 'extra familial' harm. It is also recognised that it requires a safeguarding response. These types of harm include;

- Peer on peer
- Sexually harmful behaviour
- Sexual and criminal exploitation
- Bullying

Where extra familial harm is identified or suspected, schools should liaise with their safeguarding partners. Schools are places of safety and have key roles in safeguarding and in promoting healthy relationships.

Anti-Bullying

St Bernadette's is aware that to allow or condone bullying may lead to consideration under child protection procedures.

The school has an Anti-Bullying Policy and Hate Crimes Policy in line with Cardiff Council's guidance document '[Challenging Bullying, Hate Crime, Hate Incidents and Harassment](#)', issued in December 2021 in line with '[Welsh Government's Right, respect equality – challenging bullying guidance](#)' – Nov 19.

The Anti-Bullying Policy will be reviewed annually by the governing body

Child Exploitation

As a school we recognise our responsibilities to safeguard and promote the wellbeing of our pupils when there are concerns that they are at risk of abuse through exploitation. (Criminal, County Lines, and Sexual).

Child exploitation is the coercion or manipulation of children and young people into taking part in activities (criminal, sexual etc.). It is a form of abuse involving an exchange of some form of payment which can include money, mobile phones and other items, drugs, alcohol, a place to stay, 'protection' or affection. The vulnerability of the young person and grooming process employed by perpetrators renders them powerless to recognise the exploitative nature of relationships and unable to give informed consent.

Exploitation includes:

- abuse through exchange of sexual activity for some form of payment or gift
- abuse through the production of indecent images and/or any other indecent material involving children whether photographs, films or other technologies
- abuse through grooming whether via direct contact or the use of technologies such as mobile phones and the internet
- abuse through trafficking for sexual or criminal purposes
- abuse through taking ownership of individuals property (cuckooing).

Children do not volunteer to be sexually exploited and they cannot consent to their own abuse; they are forced and/or coerced.

Child Sexual Exploitation might be when someone gives you things like love, affection, food, money or gifts, but then makes you do sexual things to pay them back. They might make you feel special, or make you think that you're in a relationship, but that's not true. Sometimes they can be violent or say nasty things.' (Child Sexual Exploitation Steering Group, 2019)

If the school is concerned that a pupil is at risk of CSE a Safeguarding Adolescents from Exploitation (SAFE) child exploitation screening tool should be completed. If the screening tool identifies a risk of significant harm, and the young person is NOT open to Children Services you MUST make a referral. Do this by completing a Multi-Agency Referral Form (MARF) and submitting it along with this form into Children's Services through the Multi Agency Safeguarding Hub (MASH) in line with the duty to report under the Wales Safeguarding Procedures 2019.

If child is open to Children Services, please send the completed screening tool to the following email address SAFE@Cardiff.gov.uk

See appendix 6, for the form, screening tool and guidance document

Cardiff Think Safe Team

Contact: Stephanie McKay, Principle Social Worker

07973730371

Stephanie.McKay@cardiff.gov.uk / Stephanie.McKay@caerdydd.gov.uk

Peer-on-peer abuse and harmful sexual behaviour

Keeping Learners Safe advises all staff working in education settings should understand and recognise the risks of peer-on-peer abuse and harmful sexual behaviour. The Welsh Government has funded the NSPCC and Barnardo's to produce guidance on harmful sexual behaviour, sexual exploitation and peer-on-peer abuse for schools, which will be available on Hwb.

The DSP should have a good understanding of harmful sexual behaviour and this should form part of their safeguarding training. Information about safeguarding children where there may be concerns about harmful sexual behaviour is available in an All Wales Practice Guide, published with the Wales Safeguarding Procedures. It includes information about peer abuse.

For more information on recognising sexual harmful behaviour please refer to https://www.proceduresonline.com/manchester/cs/user_controlled_lcms_area/uploaded_files/Brook%20Traffic%20Light.pdf

Vulnerabilities and Risks to Sexual Exploitation

Vulnerabilities

Vulnerabilities	Risks	Significant Risks
<ul style="list-style-type: none"> ● Learning or functioning difficulty ● Parental substance misuse ● Parental mental health difficulties ● Domestic violence within families ● Physical abuse in childhood ● Sexual abuse in childhood ● Emotional abuse in childhood ● Neglect in childhood ● Family member involved in sex work ● Breakdown of family relationships ● Bereavement ● Low self-esteem ● Isolated from peers/ social networks ● Lack of positive relationship with a protective, nurturing adult ● Experience of local authority care (Looked after child) ● Parents/ carers who do not recognise risk/ act protectively ● Living in unsuitable accommodation ● (Aged 16-17 years living independently) 	<ul style="list-style-type: none"> ● Victim of sexual assault (not sexual abuse in childhood) ● Exclusion/ absence/ disengagement from school/ education/ training ● Staying out beyond the permitted time ● Concerning use of a mobile phone (e.g. having more than one phone) ● Concerning use of the internet (e.g. multiple social network accounts in different names) ● Sharing/ receiving/ possessing indecent images ● Alcohol/ drug misuse ● Multiple callers ● Expressions of despair (for example self-harm, aggressive outbursts) ● Sexually active/ STIs/ pregnancy/ termination ● Not keeping in touch with a protective adult (children aged 16-17 years living independently) 	<ul style="list-style-type: none"> ● Missing overnight or longer ● Significantly older 'boyfriend' or a relationship with a controlling adult ● Getting in/ out of vehicles driven by unknown/ concerning adults ● Meeting in person people they have first 'met' on line ● Spending time in areas known for sex work/ CSE hotspots ● Peers involved in CSE ● Disclosure of a sexual/ physical assault followed by withdrawal ● Exchanging sexual acts for drugs, alcohol, money, etc. ● Coerced into sexual acts <p>Having unexplained money/ mobile phone/ clothes/ drugs/ alcohol/ other items</p>

Children Missing Education

Procedures for schools to follow when a pupil leaves without a known destination

The local authority has a statutory responsibility to ensure that children missing from education are identified quickly and that effective monitoring systems are put in place to ensure that the young person gains access to the most appropriate provision as quickly as possible.

Responsibilities

It is the duty of all who work in the education service to secure the safety of children in their charge.

Schools have a vital role to play when children go missing from the education system. Schools and School Attendance Officers must undertake immediate actions to try and identify the whereabouts of child/children by utilising existing contact information for the family, siblings or extended family. **Appendix 1** contains a checklist for schools which outlines actions that they need to undertake.

To ensure that schools put in place effective systems for monitoring children and young people missing from education they should have a designated Child Protection Co-ordinator who is made aware of any child missing from school (and in any case when absence is erratic as this may indicate risk or concerns). They should be responsible for ensuring that the procedures for making the authority aware of any child missing from education have been followed.

Schools should have clear child protection guidelines about the action to take should they become concerned about the whereabouts of any child or young person.

If the child is on the Child Protection Register or should the school have particular child protection concerns about the child the school should immediately notify the Children's Access Point on 029 2053 6490 Monday to Friday, 8.30am-5pm. If it is outside of these hours please call the emergency duty team on 029 2078 8570.

Procedures for Schools

When a child or sibling group appear to have gone missing or are withdrawn from a maintained school in Cardiff without the parent/carer giving notice or without the school being advised of a new school, the school must undertake the following actions:

- Where a pupil has **10 consecutive days** of unexplained absence, School Attendance Officers must undertake immediate actions to try to identify the whereabouts of child/children by utilising existing contact information for the family, siblings or extended family, talking to the child's friends, home visiting, approaching neighbours and contacting other agencies to try to establish the whereabouts of the child/children.
- The School and/or the School Attendance Officer must then complete the CME checklist for schools which is included. **Appendix 1.**
- If initial enquiries fail to establish the whereabouts of the child/children, the completed CME checklist should be forwarded to the Education Welfare Service (EWS) to undertake further tracking. This should be sent to ewsreferrals@cardiff.gov.uk. Tel: 029 2087 3619.
- The referral should include a copy of the registration document, and details of any letters sent/enquiries made.

- The EWS will continue to try to trace the child, using contacts with council tax department, police, health, housing, etc.
- Although the Education (Pupil Registration) Regulations 1995 state that a child may be deleted from roll after 20 school days of continuous absence without good reason (10 school days if returning from holiday late) there is a clear responsibility to ensure that the correct procedures of investigating this absence has been followed as any child missing from education may raise potential child protection issues.
- The pupil should remain on the school register until all reasonable enquiries are completed even if this means that the pupil will amass more than 20 days absence.
- The outcome of the school and local authority's attempts to trace the pupil will dictate the next steps and whether it is appropriate for the child to be removed from the roll of the school. If they are unable to find the pupil they must refer the case to the appropriate agencies. It is important that all of the steps outlined above are clearly documented to ensure that there is a clear audit trail of the steps that have been taken to locate the child.
- Only once the Education Welfare Service has completed their enquiries and advised the school of the outcome can the school then remove the pupil from the roll. With the agreement of the EWS ***the removal can be backdated to the point where the child last attended.*** (Until then, the 'N' code should be used – no reason provided – unauthorised absence).
- Schools **should not** record pupil movements as 'moved house' or 'gone out of area' as the reason for leaving on SIMS. Information such as moved to Manchester, London or Swansea is also too vague and unacceptable without following the step below.
- If you have only been told that the child has for e.g. 'moved to Manchester' but do not have the details of a new school, you must refer to your School Attendance Officer for follow up with the LA where the child is assumed to be. They will need to contact Admissions or Education Welfare in the new LA to track this. A 'Movement of Children Template' is included in **Appendix 2**.
- The EWS appreciates that not all moves are well planned in advance and that schools may not immediately have been provided with the details of the new school. If the school has therefore recorded a destination of - ST - School Transfer 'Manchester' (and the SAO has been informed) and the new school subsequently makes contact to request a CTF or pupil file, the earlier destination will need to be manually edited with the relevant leaving information.
- If the destination is unknown it should be recorded as 'unknown' and confirmation recorded that the 'Education Welfare Service has been notified' or that a CME referral has been made. **Under no circumstances should this field ever be left blank.** This will help to ensure more efficient central tracking of pupil movement.
- The school should then create a "lost pupil" common transfer file (CTF) with XXXXXXXX as the destination code. This CTF should be immediately uploaded onto the s2s secure site where it will be held in the Lost Pupils Database.
- It is important to note that any CTF sent to the 'Lost Pupil' area of the s2s site can contain details of only one pupil.

- If the pupil has a statement, the school should inform the Casework Team at Mynachdy.
- For most families, moves and changes of school are planned events and information could be gathered regarding the proposed move or school transfer. It may be helpful in tracking children and young people and save time later, if the parent can be asked to complete a form to provide this information. **Appendix 3** contains an example 'Leaving School Notification form' that many schools have now adopted.
- Schools may find it helpful to include this form in their attendance policy and their admission pack for parents, make it available via their website, refer to it in the home-school agreement as well as reminding parents in school newsletters etc
- If School identify or have concerns a child may be working unlawfully please contact Education Safeguarding Team educationsafeguarding@cardiff.gov.uk

Elective Home Education

When parents withdraw their child from school to educate at home and the child is of compulsory school age, the name of the child can only be deleted from the admissions register of the school where the parents inform the school in writing as provided by the *Education (Pupil Registration) Regulations 1995 under Regulation 9(1)(c)*: "that he has ceased to attend the school and the proprietor has received written notification from the parent that the pupil is receiving education otherwise than at school".

- It is then the duty of school to inform the Local Authority within the ten school days immediately following the date on which the pupil's name was so deleted.
- The Elective Home Education Notification form (**Appendix 4**) should be completed, signed by the Headteacher and sent together with a copy of the parents' letter to:

Admissions, Education Service, Cardiff Council, County Hall, Atlantic Wharf, Cardiff CF10 4UW

- If the parent informs the Local Authority in writing, they will then notify the school.
- The child's name should then be removed from the school roll. The leaving reason needs to be recorded in SIMS as EH – Educated at home (please do not use EO). It would be helpful if schools can add that 'Notification sent to Admissions'
- A CTF should be created with MMMMMMMM as the destination code and uploaded onto the s2s website. This enables the CTF to be stored securely and to be available if the child or young person returns to a maintained school. This will ensure more efficient central tracking of pupil movement.

School Clubs

A well-run club should welcome questions about our school activities and policies. They should have the right arrangements in place, and to give this kind of information to anyone who

leaves a child in their care. If an outside agency is used by the school to run a before/after school club, the following document must be completed:

Documents	General information	Have you had sight of this
Lead person if you have concerns	A named and contactable welfare officer responsible for the implementation of their safeguarding policy and issues regarding the protection of children or young people	
Safeguarding Policy	Clubs and organisations should have a safeguarding policy, with a clear procedure for dealing with poor practice concerns or risk of abuse	
Safeguarding training	All staff and volunteers should have up-to-date recognised safeguarding training. Sports organisations often require and are able to provide sport-specific training programmes for staff and volunteers	
Code of Conduct	A clear code of conduct is developed and maintained outlining the standard of conduct that is acceptable to children, staff, volunteers and parents.	
Parental consent	As part of registration the club should ask for emergency contacts, key medical information (allergies, asthma etc), special needs and any other issues that the club needs to know about Written consent is obtained from parents if physical contact is required for demonstration purposes e.g. positioning Written parental consent is obtained from parents if images of their child is taken along with details of the purpose/usage and retention periods of the images.	
DBS	Have all staff and volunteers been selected through a proper recruitment process. safe recruitment procedures for those working with young people that include: a clear job description, appropriate references, criminal records check (eg DBS) for relevant posts and technical qualifications	
Ratio of supervising adults to children	What are the recommended ratios? You may need to refer to the organisation responsible for the sport/activity.	
First Aid Certificate Instructor Public indemnity insurance	Procedure for reporting and responding to injuries or accidents that occur within club time	
Coach qualifications	The coach should have a recognised qualification to clarify they are qualified and have the technical competence in the sport/activity at the right level. Coaches need to be competent to deliver and oversee the sport or activity safely	

Children and Young People Missing from Education Checklist
 Actions to be taken by **School Attendance Officer** to locate the child/young person



If the school has any Child Protection concerns, the matter must be immediately referred to Social Services and the police. You must still proceed with the referral to the Education Welfare Officer, even if a child protection referral has been made.

Name:	M/F	Date of Birth	NCY
Name of Parents/primary carer:			
Address:		Telephone:	

SCHOOL ACTIONS – Has the school done the following?

Actions	Date	Outcome
Carry out first day calling/contact		
Attempt telephone contact with all emergency numbers		
Write to last known address and address of emergency contacts if known		
Speak to appropriate agencies i.e. Careers Wales, youth workers, school nurse		
Check with wider school community e.g. staff, other pupils, carers, friends & any known relatives		
If siblings attend different schools make contact to share information		
Carry out home visit		
Any other contact/relevant information		
Referral Details		
Date referred to Education Welfare Service		
Name of School		
Name of Attendance Officer		
Contact Number		

NB Do not remove child/young person from roll until EWS have concluded investigations and confirmation received

Movement of Children Form**ENQUIRY**

The children listed below are either known to the Cardiff Education Welfare Service in a casework capacity or have left the authority without providing full details of their new address/school. I would be grateful if you could make enquiries to establish whether they are now resident in your area and notify me as soon as possible even if your enquiries were unsuccessful.

CHILD'S NAME (Please also complete in bottom Section)	SCHOOL ATTENDED	DATE OF BIRTH

NAME OF PARENT/GUARDIAN	
ADDRESS WHILE RESIDENT IN CARDIFF	
NEW ADDRESS	
REMARKS	

REPLY

CHILD'S NAME	SCHOOL TO WHICH ADMITTED
CHILD(REN)'S ADDRESS	

Signed: _____ Date: _____

The Education Welfare Service, Cardiff Council, Room 422, County Hall, Atlantic Wharf Cardiff CF10 4UW
Gwasanaeth Lles Addysg, Cyngor Sir Caerdydd, Ystafell 422 Neuadd y Sir, Glanfa'r leryd, Caerdydd CF10 4UW

Tel/Ffon: 029 20873619 Fax/Ffacs: 029 20877035 Email/Ebost: ewsreferrals@cardiff.gov.uk

LEAVING SCHOOL FORM FOR PARENTS

If your child is leaving, please can you fill in this form as fully as you can even if you do not know all the details yet



Name:	Date of Birth:	Class:
My child will be leaving school on: (date)		
Because we are: (please tick)	a.	Moving House
	b.	Returning to country of origin/emigrating
	c.	Other – please give details
New address if known:		
New school if known:		
If not yet known, the town or at least the country you are moving to:		
Will you keep the same mobile telephone numbers? Yes <input type="checkbox"/> No <input type="checkbox"/>		
Please confirm your numbers or list new numbers:		
<i>Mother's mobile</i> <i>Father's mobile</i>		
If possible please give the name, address and telephone number of a friend or relative in the UK who is not moving and who you will be staying in touch with. <i>We will only contact them if we need information about your child's new school and we cannot contact you. In most cases this will not be necessary because the new school will contact us to transfer your child's information.</i> <i>Name:</i> <i>Address:</i> <i>Phone Number:</i>		
Full Name(s) of Parent(s)/Carer(s). Please print names and sign. Mother..... Father..... ... Other (state relationship)		
Attached to this form is a school compliments slip. Please can you give it to your new school and ask them to contact us.		
For school use only. Date returned:		Date returned to EWS:

The school is expected to transfer information as quickly as possible to your child's new school. Both the school and the Local Authority have a legal duty to try to locate your child if he or she stops attending and we do not know the details of the new school or other educational provision. This may include contacting Social Services or the Police if you have not given us the information and we are unable to contact you. By filling in this form and enabling us to keep in contact with you, you are ensuring we do not need to refer to other agencies and that their time is not wasted, nor are you contacted unnecessarily.

1 NOTIFICATION OF PUPILS WITHDRAWN FROM SCHOOL TO BE EDUCATED AT HOME:**2 ELECTIVE HOME EDUCATION**

Part A

Name of child:		D.O.B.:	
Parent Name and Address: Email: Tel No:			
School:		Year Group:	
Reason for Elective Home Education (This data is collected by Welsh Government)		Please tick all that apply:	
	Attendance/prosecution		
	School cannot provide appropriate language provision		
	School / parent / child relationship breakdown		
	School cannot provide appropriate SEN provision		
	Awaiting a place in school of choice		
	Preferred school refused		
	Religious beliefs		
	Lifestyle / ideological / philosophical		
	Anxious / phobic		
	Racism		
	Homophobia		
	Bullying		
	Child medical need		
Parent medical need			
Gender identity			
Other – please specify			
Date removed from the school register:			
Elective Home Advisers:	Cindy Clapham cindy.clapham@cardiff.gov.uk Mary Lewis Mary.Lewis@cardiff.gov.uk		
Please return this form to:	EHE@cardiff.gov.uk		

Part B – please continue on a continuation form if necessary

Is the pupil subject to a statement of Special Educational Needs? Yes/No
Details of needs:

Please give details of pupil's current levels and targets for the year

If the pupil been excluded, please give dates and reasons for exclusion

Please give details of interventions and work carried out with child and parents prior to notification of decision to educate at home.

Please give details of the involvement of the Education Welfare Service

Please give details of discussions with the parent(s) prior to notification of decision to educate at home

Please provide names and contact details of any outside agencies currently involved with this pupil. For example, Social Worker, CAHMS

- Please attach a copy of the letter from the parents informing you of the decision to home educate.

Signed:		Headteacher
Date:		

Body Map

A body map is used to record information about physical injuries to a child, particularly if it is felt that the injury is non-accidental or thought to be following a pattern. The body map provides a visual record of and helps professionals to work together when deciding whether there is a safeguarding concern.

Note: When recording injuries, you should never photograph the child.

You should also note that using a body map does not replace medical advice and so a proper diagnosis of the injury and correct treatment should be sought by a medical professional. The body map is simply a record of what can be seen and what has been said about the injury.

The details that should be included on a body map are:

- Information on who noticed the injury, when they noticed it and what their role is in relation to the child.
- Details of the injury – where it is on the child, what it looks like, its colour, shape, size and condition.
- Details of all visible injuries, even small marks that may not seem of concern at the time.
- In regards to the condition of the injury, is it deteriorating or getting better?
- Is the child in distress or indifferent about the injury?
- Information on any explanations behind the injuries.
- Observations of the child – how are they feeling, what is their behaviour like?
- Information on anything that the child or parent says about the injury.
- Include both a drawing and a written description of the injury.

All types of injury can be drawn onto the child body map, even those that appear to be accidental and part of a child's natural development. For the purpose of this guidance, any injury that may have resulted from a restrictive physical intervention should be recorded.

After drawing on your observations (along with any written comments), a decision needs to be made on whether there is an immediate risk to the child or whether they need to be taken for treatment for their injury.

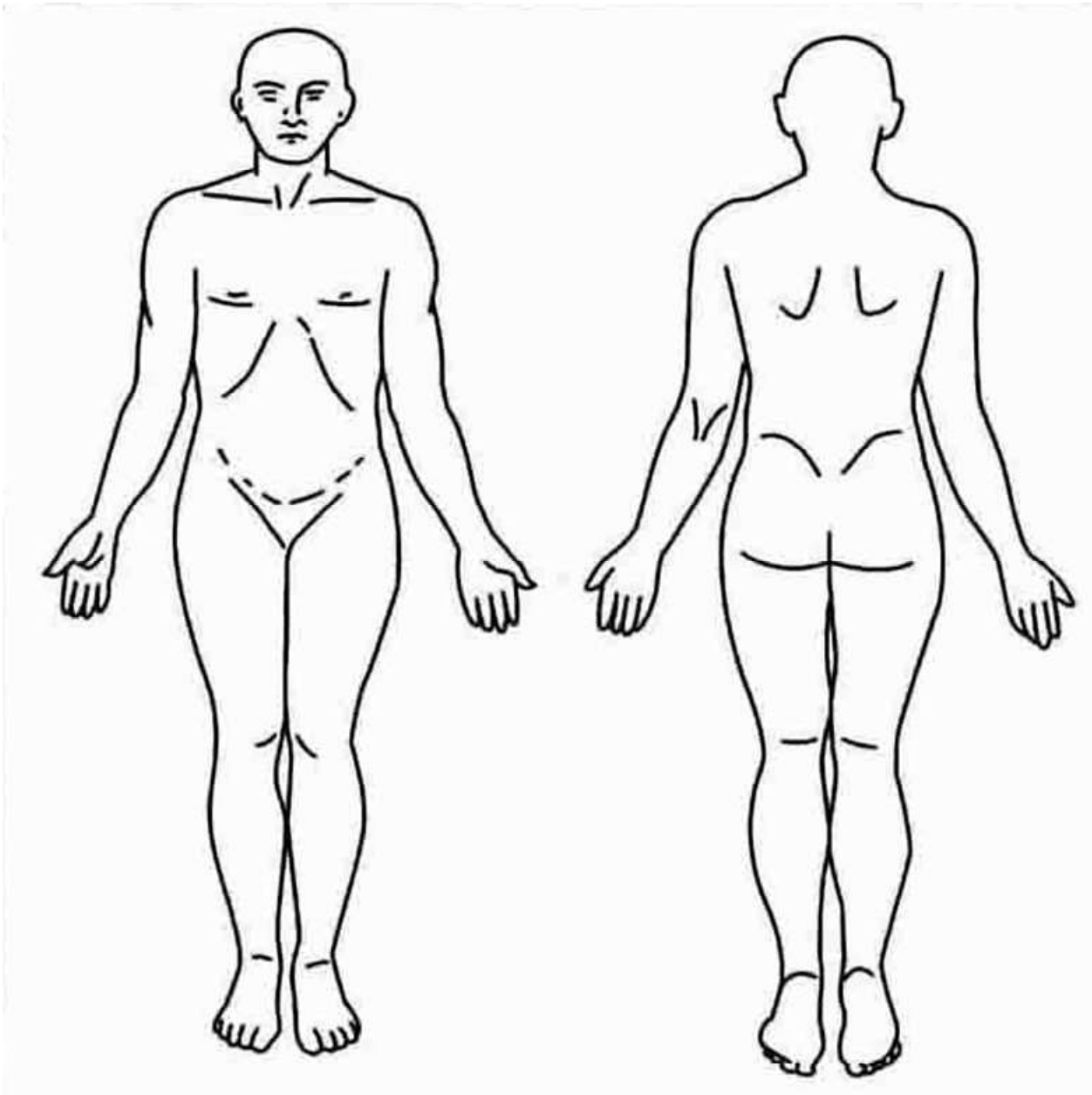
Keep note of any safeguarding concerns that you may have and share these with your manager or person in charge of child protection within your school or setting, such as a **designated safeguarding officer**.

If it's appropriate to do so, share the findings of your observations with the parents or carer of the child so that they understand what decisions have been made and why.

Body Map

Name of child _____ Date of birth: _____

Body Map is to be used to record the location, size and number of injuries, marks or bruises.



Body Map notes:

Please use the space below to make any 'close-up' drawings of body parts/injuries highlighting where they appear on the above body map, e.g. injury to arms, legs, torso, etc.

Name/designation of person completing Body Map form: _____

Contact details of person completing Body Map Form: _____

Date/time of completion: _____

Safeguarding Adolescents from Exploitation (SAFE)

Child Exploitation Screening Tool

This screening tool should be used by all professionals working with children aged 10+. Professionals may also decide it is appropriate to use the tool to screen younger children where all types of Child Exploitation is suspected (Emerging - Low/significant - Medium/experiencing - High).

This screening tool will help you focus on the specific indicators of all types of Child Exploitation and determine whether further investigations are needed. The tool could be used at any point Child Exploitation is considered a risk. An example of this is in discussion with the child, in supervision, discussions with parents and carers, and with other professionals.

Young Person's details

Child's Name:		DoB:	
Address:		Home/mobile Phone:	
GP Surgery:		School/College:	
Ethnicity		Sexual Orientation (if known)	
Religion		Language spoken (Indicate first language)	

Referrers Details

Name and job title of person completing:		Date completed:	
Organisation:		Contact e-mail: Telephone:	

Lead Agency Involvement

No Lead Agency	Early Help	Child in Need of Care and Support	Child Protection	Child Looked After – in or out of county placement?

Indicator	Suggested risk level	Yes/No	Possible
Health Domain Physical Signs			

Bruising / Unexplained Injuries – think about injuries caused through violence, A&E attendances Threat to life			<input type="checkbox"/>
Change in Physical Appearance Example: dishevelled appearance or a sudden change in the way Child dresses, losing or gaining weight			<input type="checkbox"/>
Sexually Transmitted Infections (STI's)			<input type="checkbox"/>
Injuries – evidence of physical or sexual assault			<input type="checkbox"/>
Pregnancy, termination or repeat testing for sexually transmitted infections			<input type="checkbox"/>
Disclosure of sexual violence/assault even if followed by withdrawal of allegation. Examples: Sexual assault, rape, internally inserting drugs in rectum or vagina (Plugging), indecent images shared as part of initiation, revenge or punishment			<input type="checkbox"/>
Notes			
Health Domain			
Emotional Signs			
Expressions of low emotional health and wellbeing			<input type="checkbox"/>
Anger / Aggression			<input type="checkbox"/>
Withdrawn			<input type="checkbox"/>
Extreme Mood Changes – if other risks of CE are identified then the risk would increase			<input type="checkbox"/>
Low self-esteem / self confidence			<input type="checkbox"/>
Self-harm indicators and/or suicidal thoughts/attempts			<input type="checkbox"/>
Disengaged from known adults and interests, an invincibility attitude or not caring about what happens to them			<input type="checkbox"/>
Young person's sexuality increases their vulnerability as they feel unaccepted due to sexual orientation Is the young person transitioning/historical sexual abuse?			<input type="checkbox"/>
Evidence of a Learning or physical disability			<input type="checkbox"/>
Notes			
Material Signs			
Use of a mobile phone that causes concern/ Multiple mobile phones, including that of burner phones			<input type="checkbox"/>
E- Safety – Secretive about mobile phone/more than one mobile phone Making/ receiving explicit videos/ sexting Late night excessive phone/ internet activity			<input type="checkbox"/>

Has extra money/new items (Gifted electric scooter, bikes) /'gifts' that cannot legitimately be accounted for/received from unknown sources			<input type="checkbox"/>
New clothing / Footwear which can not be accounted for by parents/carers			
Young Person being found to have large amounts of drugs on them			<input type="checkbox"/>
Have they been to hotels, Air B&B, have they got hotel cards or keys to unknown places, with unknown adults			<input type="checkbox"/>
Notes			
Behavioural Signs			
Change in behaviour, such as secretive, anger, lifestyle, disruptive behaviour, violent behaviour			<input type="checkbox"/>
Missing episode			<input type="checkbox"/>
Persistently going missing from home or school and/or being found out of area. Think about their presentation on return, dishevelled? Hungry?			<input type="checkbox"/>
Starting or increase drug use - cannabis, Class A, Class B,			<input type="checkbox"/>
Starting or increased Alcohol use			<input type="checkbox"/>
Staying out late without reasonable explanation			<input type="checkbox"/>
Frequenting areas known for exploitation (including private dwellings) on more than one occasion			<input type="checkbox"/>
Using sexual, gang, drug related or violent language you wouldn't expect them to know			<input type="checkbox"/>
Increased use of internet– use of several media sites			<input type="checkbox"/>
Young person has been coerced to take/share indecent images			<input type="checkbox"/>
Arrested/Evidence of criminality			<input type="checkbox"/>
Young person carrying / concealing weapons			<input type="checkbox"/>
Change in education attendance/Change in education provider/Missing from education			<input type="checkbox"/>
Absent from school / Non-school attendance			<input type="checkbox"/>
Exclusion from school			<input type="checkbox"/>
Glamorised view of criminality			<input type="checkbox"/>
Entering / leaving vehicles driven by unknown adults / adults of concern			<input type="checkbox"/>
described as out of control or as having risky behaviour by their family, carers or by practitioners			<input type="checkbox"/>
Notes			
Family /Associate signs – vulnerability and risks			
Parents / Carers not reporting young person missing			<input type="checkbox"/>
Multiple or concerning contact (unknown adults / older young people)			<input type="checkbox"/>

Young person feels indebted to an individual or group – drug debt			<input type="checkbox"/>
Family or young person having to move or leave their home because of threats			<input type="checkbox"/>
Associates known to be involved in criminality or Organised Crime Groups (OCG's)			<input type="checkbox"/>
Living in a chaotic / dysfunctional household			<input type="checkbox"/>
Relationship breakdown with family and or peers, sudden change of friendships			<input type="checkbox"/>
Association with others who have been exploited			<input type="checkbox"/>
Tartgeted threats to family / threats at home			<input type="checkbox"/>
Absence of safe trusted adult			<input type="checkbox"/>
Young Carer			<input type="checkbox"/>
Young person has limited age appropriate friendships / struggles to maintain friendships			<input type="checkbox"/>
Older 'relationship' with controlling adult.			<input type="checkbox"/>
Association with older and/or risky peers			<input type="checkbox"/>
Notes			
Other			
Services have not been able to engage with child			<input type="checkbox"/>
Homeless / innapropriate accomodation (prompt)			<input type="checkbox"/>
Notes			
Are Parents / Carers aware of these concerns?		<input type="checkbox"/>	<input type="checkbox"/>
Does the child have awareness of these concerns?		<input type="checkbox"/>	<input type="checkbox"/>
Does the young person consent to you sharing this information?		<input type="checkbox"/>	<input type="checkbox"/>
Does the parent consent to you sharing this information?		<input type="checkbox"/>	<input type="checkbox"/>

Please summarise the evidence using the VOLT model indicated from the tick boxes and detail why you ARE or ARE NOT proceeding with a referral.

Based on your risk and vulnerability identification please capture key information using the **Victim, offender, location, themes (VOLT)** mnemonic. Please bullet point information.

Victim (s)– Young person	
Offender (s)	
Locations (s)	
Theme (s) These are places that children gravitate towards, e.g. hotels, eateries, shopping venues, particular transport hubs, addresses, children's care homes and youth clubs. What times are they attending these locations, how are they travelling to these venues, is the venue a 'go-to' place for when the child has experienced a missing episode?	
Risk Category identified	What next?

If the screening tool identifies a risk of significant harm, and the young person is NOT open to Children Services you MUST make a referral. Do this by completing a Multi-Agency Referral Form (MARF) and submitting it along with this form into Children's Services through the Multi Agency Safeguarding Hub (MASH) in line with the duty to report under the Wales Safeguarding Procedures 2019.

If child is open to Children Services, please send the completed screening tool to the following email address SAFE@Cardiff.gov.uk

Consent

Please be aware that appropriate consent is required before information is shared unless doing so may cause the child to suffer significant harm. If you are unsure seek advice from your safeguarding lead, MASH social workers or the Early Help Gateway.

[Child Exploitation Risk Ratings \(2020\).pdf](#)

All Records from May 2018 are written and stored confidentially on the MyConcern website. Documents 1, 2 and 3 are only to be used as a point of reference or in exceptional circumstances.

Document 1

RECORD OF CONCERN

Child's Name:			
Child's DOB:			
Male/Female:	Ethnic Origin:	Disability Y/N:	Religion:
Date and Time of Concern:			
Your Account of the Concern: (what was said, observed, reported and by whom)			
Additional Information: (context of concern/disclosure)			
Your Response: (what did you do/say following the concern)			
Your Name:			
Your Signature:			
Your Position in School:			
Date and Time of this Recording:			
Action and Response of DSP/ HT			
Name:		Date:.....	

List of supporting documents

Please find a list of supporting documents which will assist you in completing Child Protection and Safeguarding policies: -

Welsh Government Documents

- [Keeping learners safe | GOV.WALES](#)
[Cadw dysgwyr yn ddiogel | LLYW.CYMRU](#)
- [rights-respect-equality-statutory-guidance-for-governing-bodies-of-maintained-schools.pdf](#)
Parchu erail: Trosolwg gwrth-fwlio
- [self-assessment-tool-respect-and-resilience.pdf \(gov.wales\)](#)
[pecyn-hunanasesu-gwrthsafiad-a-pharch.pdf \(llyw.cymru\)](#)
- [Ending Violence against Women and Girls \(publishing.service.gov.uk\)](#)
- [gen-ld11671-w.pdf \(senedd.cymru\)](#)Female genital mutilation: guidance for professionals | [GOV.WALES](#)
- [Anffurfio organau cenhedlu benywod: canllawiau i weithwyr proffesiynol | LLYW.CYMRU](#)
- [Opening schools as well as childcare and play settings in extreme bad weather and extreme hot weather \[HTML\] | GOV.WALES](#)
- [Agor ysgolion yn ogystal â lleoliadau gofal plant a chwarae yn ystod tywydd eithafol o arw a thywydd eithafol o boeth \[HTML\] | LLYW.CYMRU](#)
- [accident-disease-recording-and-reporting-guidance-for-contracted-provision.pdf \(gov.wales\)](#)
- [Health and safety management: code of practice for contracted provision | GOV.WALES](#)
[Rheoli Iechyd a Diogelwch: cod ymarfer ar gyfer darpariaeth dan gontract | LLYW.CYMRU](#)
- [Inclusion and pupil support: guidance for schools and local authorities | GOV.WALES](#)
[Cynnwys a Chynorthwyo Disgyblion: canllawiau ar gyfer ysgolion ac awdurdodau lleol | LLYW.CYMRU](#)
- [Additional Learning Needs and Education Tribunal \(Wales\) Act | GOV.WALES](#)
[Deddf Anghenion Dysgu Ychwanegol a'r Tribiwnlys Addysg \(Cymru\) | LLYW.CYMRU](#)
- [Guidance on penalty notices for regular non-attendance at schools \(gov.wales\)](#)
- [Safe and effective intervention: guidance for schools and local authorities | GOV.WALES](#)
[Ymyriadau diogel ac effeithiol: canllawiau ar gyfer ysgolion ac awdurdodau lleol | LLYW.CYMRU](#)
- [Effective managed moves for children and young people: guidance for local authorities | GOV.WALES](#)
[Defnydd effeithiol o symudiadau wedi'u rheoli i blant a phobl ifanc: canllawiau i awdurdodau lleol | LLYW.CYMRU](#)
- [Exclusion from schools and pupil referral units \(PRU\) | GOV.WALES](#)
[Gwahardd o'r ysgol ac unedau cyfeirio disgyblion | LLYW.CYMRU](#)
- [All Wales attendance framework | GOV.WALES](#)
[Fframwaith presenoldeb ar gyfer Cymru gyfan | LLYW.CYMRU](#)
- [Educational psychologist: guidance | GOV.WALES](#)

[Seicolegydd addysgol: canllawiau | LLYW.CYMRU](#)

- [Elective home education | Sub-topic | GOV.WALES](#)
[Addysg ddewisol yn y cartref | Is-bwnc | LLYW.CYMRU](#)
- [Special educational needs: code of practice | GOV.WALES](#)
[Anghenion addysgol arbennig: cod ymarfer | LLYW.CYMRU](#)
- [Raising the ambitions and educational attainment of children who are looked after | GOV.WALES](#)
[Codi uchelgais a chyrhaeddiad addysgol plant sy'n derbyn gofal | LLYW.CYMRU](#)
- Young Carers Speak Out! Final report (Cascade report)
<http://www.valeofglamorgan.gov.uk/Documents/Living/Social%20Care/Looking%20after%20Someone/Final-Young-Carers-Survey-Report-by-CASCADE.pdf>
- [School complaints procedures: guidance | GOV.WALES](#)
[Gweithdrefnau cwyno ysgolion: canllawiau | LLYW.CYMRU](#)
- [Disciplinary and dismissal procedures for school staff | GOV.WALES](#)
[Gweithdrefnau disgyblu a diswyddo staff ysgol | LLYW.CYMRU](#)
- [Handling allegations of abuse against teachers and staff | GOV.WALES](#)
[Canllawiau ar ymdrin â honiadau o gam-drin yn erbyn athrawon a staff | LLYW.CYMRU](#)
- [Healthy Eating in Schools \(Nutritional Standards and Requirements\) \(Wales\) Regulations: equality impact assessment | GOV.WALES](#)
[Rheoliadau Bwyta'n Iach mewn Ysgolion \(Gofynion a Safonau Maeth\) \(Cymru\): asesiad o'r effaith ar gydraddoldeb | LLYW.CYMRU](#)
- [Free breakfast in primary schools | GOV.WALES](#)
[Brecwast am ddim mewn ysgolion cynradd | LLYW.CYMRU](#)
- [guidance-for-education-settings-on-peer-sexual-abuse-exploitation-and-harmful-sexual-behaviour.pdf \(gov.wales\)](#)
- [Substance misuse education: guidance | GOV.WALES](#)
[Addysg camddefnyddio sylweddau: canllawiau | LLYW.CYMRU](#)
- [Common Transfer System \(CTS\) and s2s: guidance for schools | GOV.WALES](#)
[Y System Drosglwyddo Gyffredin ac S2S: canllawiau i ysgolion | LLYW.CYMRU](#)
- [School admissions code | GOV.WALES](#)
[Y cod derbyn i ysgolion | LLYW.CYMRU](#)
- [School admission appeals code | GOV.WALES](#)
[Y cod apelau derbyn i ysgolion | LLYW.CYMRU](#)

UK Government documents

[Mandatory reporting of female genital mutilation: procedural information - GOV.UK \(www.gov.uk\)](#)
[FGM Mandatory Reporting - procedural information nov16 FINAL.pdf \(publishing.service.gov.uk\)](#)

Multi-agency statutory guidance on female genital mutilation April 2016

- [HM Government - Multi-agency statutory guidance on Female Genital Mutilation \(publishing.service.gov.uk\)](#)

Cardiff Council Documents

- Children Missing Education Summary
- Visitors and External Speakers Policy
- Use of Reasonable Force
- Safe Use of Pupils Images – Best Practice Guidance for School
- Guidance for Safer Working Practice with Children, Young People and Vulnerable Adults - **(CIS document 5.HR.026)**
- School Staff Disciplinary Procedure - **(CIS document 1.CM.035-Sch)**
- Gweithdrefn Disgyblu Staff Ysgol - **(CIS document 1.CM.035-Sch-W)**
- ICT Protocol for Schools - **(CIS document 9.SC.SLL.010)**
- ICT Protocol For Schools Cymraeg - **(CIS document 9.SC.SLL.010.WEL)**
- Disclosures and Barring Service (DBS) Policy - **(CIS document 1.CM.202)**
- Polisi Cyflogaeth Y Gwasanaeth Datgelu A Gwahardd (GDG) - **(CIS document 1.CM.202-W)**

Cardiff and Vale Regional Children Board Documents

- Cardiff Child Sexual Exploitation Prevention Strategy (English only)

Information and Records Society Documents

- [IRMS Schools Toolkit - Information and Records Management Society](#)

Team Teach Training

- <https://www.teamteach.co.uk/>

N.B Guidance and case law updates and changes regularly. It is the responsibility of Schools and Governing Bodies to keep themselves fully updated with guidance changes.

[Microsoft Word - Boys and Girls and the Equality Act April 2021 England and Wales.docx \(sex-matters.org\)](#)

N.B Guidance and case law updates and changes regularly. It is the responsibility of Schools and Governing Bodies to keep themselves fully updated with guidance changes.